

DISCOVERING NATURE

17.0627 TC

Black

18.1027 TC

11.0105 TC

19.4922 TC

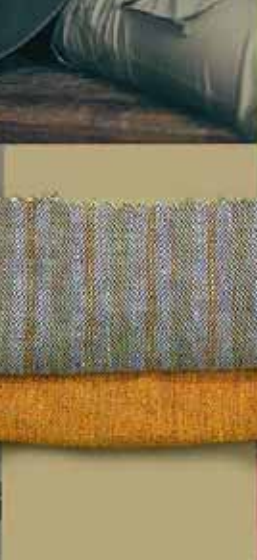
14.1045 TC

18.4244 TC

13.0752 TC

15.1216 TC

18.1235 TC





DISCOVERING NATURE

Inspiration

An exotic, ethnic journey through desert landscapes. Garments are casual and functional, but very sophisticated. A mix of modern, timeless fashion and inspiration from the Fifties, in which safari themes and – particularly – African influence was mixed with modern design and/or bold ethnic designs. A tone-in-tone theme, subtly using colour accents to attract attention. We see the animal kingdom transposed into designs printed on cotton voiles and elegant linens, sometimes in a multicoloured mixture. Observe the ornaments and the carefully considered and executed details.

Statement

A design theme in honest, natural materials.

Colours

17.0627 TC
Black
18.1027 TC
11.0105 TC
19.4922 TC
14.1045 TC
18.4244 TC
13.0752 TC
15.1216 TC
18.1235 TC



Materials

Woven: matt and shiny gabardines, structured twills, rustic linen, suede and leather, cotton voiles, pure linen, all washed cotton items, very fine poplin cottons, cotton mesh, crinkled cotton, cotton/nylon, imitation crocodile and snake leather, lightweight georgettes.

Knit: rustic and irregular yarns, brushed cotton yarns, taper yarns, heavy gauge linen, open knits, silk with slubbed effects, dry-hand natural blends, linen mixtures, and ultra fine cotton mix crepes, mesh, matt jerseys, viscose/cotton blends.

Patterns: All wildlife animal designs like: zebra, snake, giraffe, parrot and peacock, next to original African batiks, camouflage designs in stripes and splodges, basket-weaves, relief structures, tie/dye effects, and spray techniques.

Accessories

Feathers, sequins, embroideries, ornaments, wooden beads, imitation horn and bone buttons, plaited leather, press studs, ribbed ribbon.

Shapes

Classic safari items, patch pockets, large oversized shirts, figure-shaped easy comfort blazers, wrap-around skirts, wrinkled items, chinos, $\frac{3}{4}$ long pants and all lengths of shorts, polo tops, T-shirts in all possible variations, button-through and balloon skirts, parkas, blousons.



RELAXING SEAFRONT

White

19.4028 TC

19.1663 TC

14.4501 TC

13.0850 TC

17.2624 TC

17.4432 TC

15.4722 TC

19.4039 TC

Black





RELAXING SEAFRONT

Inspiration

Cooling and refreshing wafts of water and wind.
A sporty but also well-dressed theme, where new simplicity sets the tone.
Clear, fresh colours complemented by a range of blue tones,
where the whites in all their nuances constitute the primary essence.
A theme where 'vintage' ceases and clearness/modernity/beauty begins.
New, modern essentials next to updated marine/sailor-inspired items .
We turn back to the pure basis but, because it is innovative,
this theme brings us modern, elegant minimalists.
This is where lightweight summer suits get their chance to make a comeback.

Statement

New simplicity and freshness.

Colours

White
19.4028 TC
19.1663 TC
14.4501 TC
13.0850 TC
17.2624 TC
17.4432 TC
15.4722 TC
19.4039 TC
Black



MULTI STRIPES IN SWEATSHIRT

REGULAR TRANSPARENT KNITTED STRIPES



SLIPPERS WITH LONG-LACE BINDINGS

STRAIGHT DENIM PANT TYPES

PARKA & BLOUSON EFFECTS

TRANSPARENT PLEATED SKIRTS



GRAPHIC CONTRAST

REFINED JACQUARDS

DIFFERENT KINDS OF STRIPES

PLEATS

SIMPLE CHECKS



CANVAS BAGS



HIGH HEELS IN STRIPES

Materials

Woven: wool/cotton blends, very fine cottons pure and bleached, cotton crepes, nylons, protective coatings or with rubberized surfaces, indigo denims, chambray, pure linen, shiny satins, mesh, fine crispy cottons mercerized next to matt, stiff or with volume, washed silks, stretched cottons.

Knit: from very fine cottons to volume and stiff, natural yarns with polyester, casual and slubbed moulines, fluidity by viscose, silk blends, linen, cotton pique, mercerized cottons, mesh, all kind off plain and melanges sweat types, terry, all cotton jersey types a lot of them with lycra.

Patterns

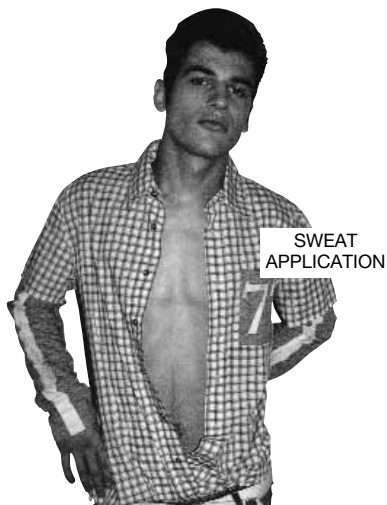
Simple stripes next to multicolour stripes, printed or woven, refined shadow checks, classic fil à fil checks, basket weaves, geometric artworks, graphic texts, various ribbed effects, structure effects.

Accessories

Plastic trimmings, metal press studs, cord, plain and patterned piping, metallic and silver accents, gold and silver-coloured zips, ribbed ribbon.

Shapes

Blousons, anoraks, non-constructed fitted blazers, accordion-pleated skirts, wide skirts, (front) pleated pants, $\frac{3}{4}$ en $\frac{7}{8}$ pants, capris, hooded sweatshirts, skipper's jerseys, trench coats, sailing jackets, boat-necks tops, button-through shirt dresses, wide-leg pants, knee-length shorts, all sweat items, polo tops.



LOGO SPORTSHOES IN LEATHER



AWAKENING CITY

19.5511 TC

14.2307 TC

16.3520 TC

13.0640 TC

15.4703 TC

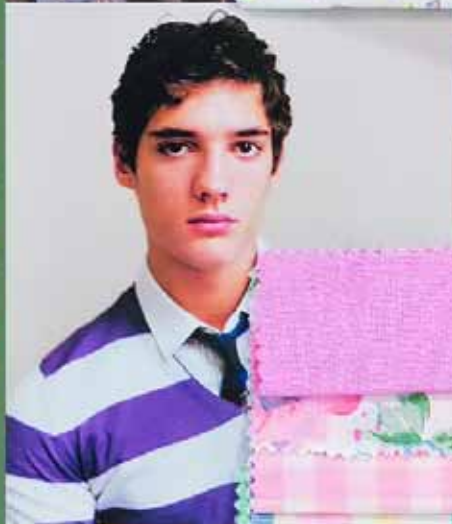
13.5907 TC

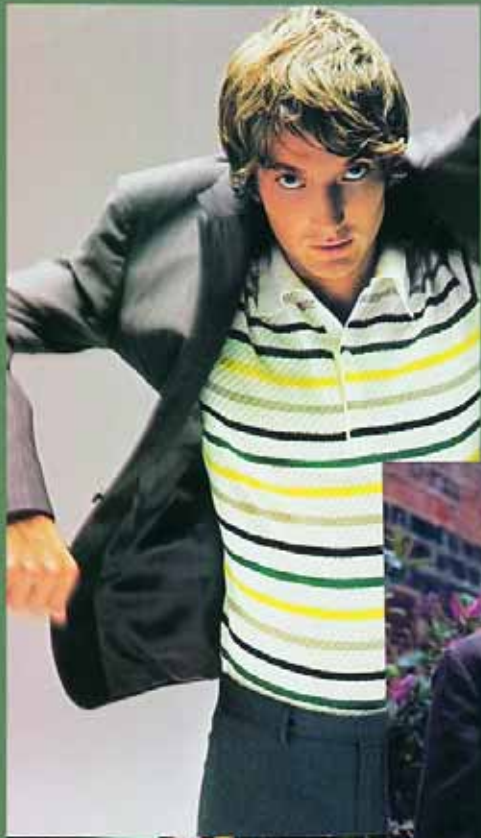
11.0105 TC

16.2126 TC

18.4039 TC

19.1762 TC





AWAKENING CITY

Inspiration

Early spring in the city.
The dawning of a new day with the fresh pastel tones of blossoms and fresh flower colours and – of course – grass greens.
This would appear to be a more conventional theme, but its styling and use of colours give it a surprising new feeling of design items in their own right.
Comeback time for light summer-wool suits, pure refinement.
Contrast in all respects – refined naturalness.

Statement

Fresh, light and subtle elegance.

Colours

19.5511 TC
14.2307 TC
16.3520 TC
13.0640 TC
15.4703 TC
13.5907 TC
11.0105 TC
16.2126 TC
18.4039 TC
19.1762 TC

MLLE FLEURS FLOWER PATTERNS



CLASSIC LEATHER SHOES IN WHITE



HATS

V-NECK SWEATERS

ROMANTIC PLEATED BLOUSES

OPEN KNIT TWIN SETS

BORDER EMBROIDERY

HANDBAGS

WIDE KNEE-LENGTH SKIRT

OVER-PRINTED FLOWER PATTERNS

EASY COMFORT BLAZERS

CHANEL TYPE BLAZERS WITH SILK CONTRAST

WIDE PANTS

PLATEAU HEELS



Materials

Woven: super lightweight wool and wool blends, linen blends, wool/cotton mixtures, fil à fil, cotton oxford and chambray, very fine crispy cottons, shiny and matt effects in cotton mixtures, cotton-silk, mercerized cotton stretch, silk georgettes, fluid polyesters.

Knit: lightweight viscose crepe yarns, 100% super light wool, lace effects, moulinés, soft thin summer wools, refined cotton blends with lycra, viscose jersey, cotton polyester fleece, silk blends, lace.

Patterns

Argyles, subtle checks, stripes thick and slender, mille fleurs motifs, flower embroideries, sophisticated logos, jacquards, lace effects.

Accessories

Refined horn buttons, differently coloured buttons in one item, piping, flower corsages.

Shapes

Lightweight suits, spencers, detailed under-shirts, twinsets, v-necked pullovers, waistcoats, pencil skirts, straight-leg pants, luxury sweats, oversized accordion pleated skirts.



SIMPLE CABLE SWEATERS

TOTAL OUTFITS IN SMALL FLOWERS

CRISPY SHIRTS WITH RUCHES

SMALL FLOWER SUITS

CLASSIC CHECKS

CORSAGES

SHORT-SLEEVED PRINTED BLOUSES

KNEE-LENGTH PANTS

BLOWN-UP CHECKS

PLEATED SKIRTS

CHANEL TYPE INSPIRATION

HUGE LEATHER BAGS

SIMPLE HIGH HEELS

ENJOYING PARADISE

16.1459 TC

18.2333 TC

18.1663 TC

18.4537 TC

19.4057 TC

14.0852 TC

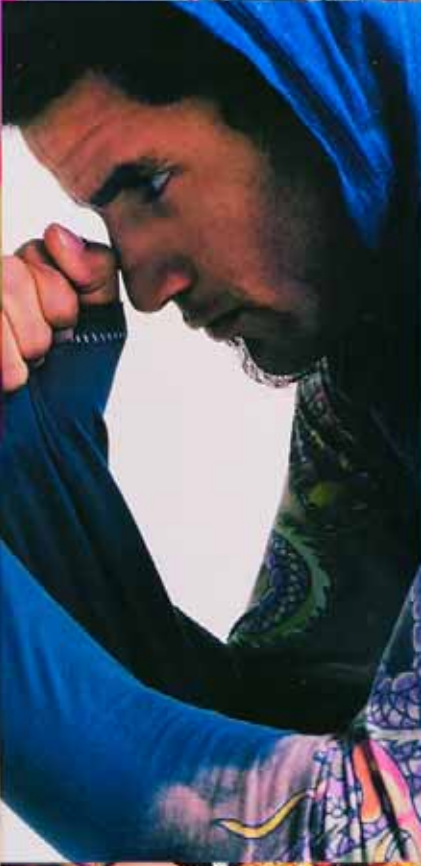
16.1357 TC

15.6442 TC

Black

Off White





ENJOYING PARADISE

Inspiration

The theme which longs to express the ultimate freedom, with a suggestion of hippie flower-power.

A variegated mixture and collection of folklore influences and styles and, next to it, a joyful combination of styles into a colourful mosaic.

Overwhelmingly embroidered garments in Indian paisley designs with, on the other hand, strongly coloured and explicit tropical printed flower patterns. This theme features a strong revival of wearing authentic, but primarily, eastern clothing.

Statement

Colourful, folkloristic design theme.

Colours

16.1459 TC

18.2333 TC

18.1663 TC

18.4537 TC

19.4057 TC

14.0852 TC

16.1357 TC

15.6442 TC

Black

Off White



EMBROIDERED BAGS



BLOWN-UP
FLOWER SHIRTS



PAISLEY PATTERNS



FULL EMBROIDERED
KAFTAN SHIRTS



MULTI-ORIENTAL
PRINTS ON VOILES



WRAP-OVER
SWEATERS



FLOWER EMBROIDERED
COTTON SHIRTS



FLOWER PRINTS
ON SLIPPERS

SHORTS

PLEATED
WAIST PANTS

Materials

Woven: hand-woven cottons, shiny silk, transparent cotton voiles, wrinkled cottons, denims in all washed out effects, washed silks, raw linen, linen/cotton blends, silk georgettes, cotton stretch.

Knit: lace, macramé, cotton lycra, handmade cotton sweaters, all sweat items, stone washed jerseys, mesh, viscose lycra, linen gauze.

Patterns

Original batiks, huge blown-up flowers, refined paisley designs, fruit inspiration, butterflies all over, bandana prints, full embroidery, placed tattoo prints, border prints, shawl prints, tie/dye effects.

Accessories

Ornamental buttons, shoelace closures, ribbed ribbon, pipings, cord, corsages, sequins, gold braid, appliques, elastic, immense wrap-around belts.

Shapes

Wrinkled gipsy flounced skirts, tunic items, detailed waistcoats, oversized shirts, wide pants with draw cord, all denim items, T-shirts and singlets, over-decorated sweatshirts, high waist effects, lycra bodys, figure-tight knee-length pants, wrapped styles, balloon skirts and blouses .

FULLY EMBROIDERED
CARDIGANS

SMALL DECORATIVE
SLEEVELESS VESTS

T-SHIRTS WITH
EMBROIDERED LOGOS

EMBROIDERED FITTED
BLAZERS

FOLKLORE
INSPIRATION

WIDE GIPSY SKIRTS

STRAW HATS

SHIRT WITH STRIPES
ARTWORK

MIX OF DIFFERENT
KINDS OF PRINTS

DECORATIVE
HIGH HEELS

BALLOON SLEEVES

CHIFFON DRESSES
WITH EMBROIDERY

